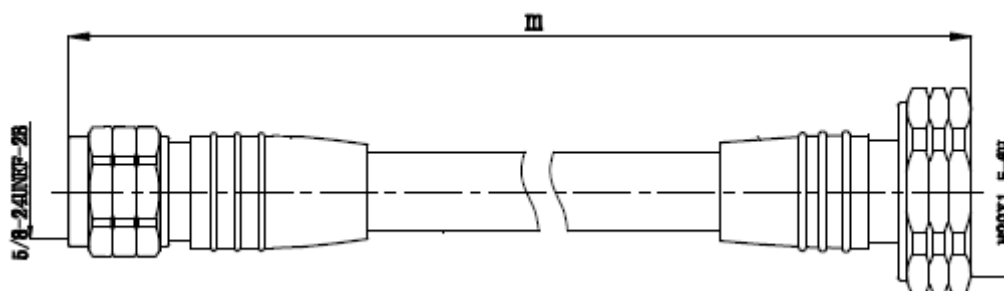


## 1/2" Super-flexible Jumper Cable, N Male to DIN Male

### JP-NM/DMxM-SF12



### Specifications

Electrical	
Characteristic Impedance - [ $\Omega$ ]	50
Frequency Range -[GHz]	DC ~ 3
Insulation Withstanding Voltage – [V]	$\geq 2500$
Dielectric Resistance – [ $M\Omega$ ]	$\geq 5000$
VSWR	$\leq 1.20$
Insertion Loss – [dB]	$0.24 \cdot L + 0.2$
3 <sup>rd</sup> Order Inter-modulation (PIM3) – [dBc] (@800 or 900 or 1800 or 2100MHz with 2x43dBm Carriers)	$\leq -150$

Mechanical	
Interface Durability, number of cycles	500
Connector Type	N Male to DIN Male
Cable Length - [m]	(Can be customized)
Outer Conductor Material	Brass, Ni or Tri-Alloy Plated
Inner Conductor Material	Brass/Phosphor bronze, Ag Plated
Gasket Material	Silicon Rubber
Insulator Material	PTFE

Environmental	
Operating Temperature - [ $^{\circ}\text{C}$ ]	-40 ~ +85

### Product Order Information

Model	ERP Code
JP-NM/DM0.5M-SF12	100608-000343-45
JP-NM/DM1M-SF12	100608-003004-45
JP-NM/DM1.5M-SF12	100608-000158-45
JP-NM/DM2M-SF12	100608-000007-45
JP-NM/DM3M-SF12	100608-000077-45
JP-NM/DM4M-SF12	100608-000471-45
JP-NM/DM5M-SF12	100608-000308-45
JP-NM/DM6M-SF12	TBA
JP-NM/DM15M-SF12	100608-000236-45

\*The above specification is subject to change without prior notice.