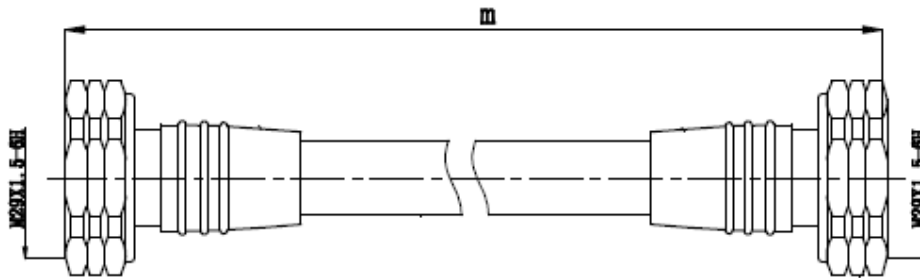


## 1/2" Super-flexible Jumper Cable, DIN Male to DIN Male

### JP-DM/DMxM-SF12



### Specifications

Electrical	
Characteristic Impedance - [ $\Omega$ ]	50
Frequency Range –[GHz]	DC ~ 3
VSWR	$\leq 1.20$
Insertion Loss – [dB]	$0.24 \cdot L + 0.2$
3 <sup>rd</sup> Order Inter-modulation (PIM3) – [dBc] ( @800 or 900 or 1800 or 2100MHz with 2x43dBm Carriers )	$\leq -150$

Mechanical	
Interface Durability, number of cycles	500
Connector Type	DIN Male to DIN Male
Cable Length - [m]	(Can be customized)
Outer Conductor Material	Brass, Ni or Tri-Alloy Plated
Inner Conductor Material	Brass, Ag Plated
Gasket Material	Silicon Rubber
Insulator Material	PTFE

Environmental	
Operating Temperature - [ $^{\circ}\text{C}$ ]	-40 ~ +85
Water-proof Rating	IP67

### Product Order Information

Model	ERP Code
JP-DM/DM1M-SF12	100608-000003-45
JP-DM/DM1.5M-SF12	100608-000395-45
JP-DM/DM2M-SF12	100608-000303-45
JP-DM/DM3M-SF12	100608-000005-45
JP-DM/DM4M-SF12	100608-000313-45
JP-DM/DM5M-SF12	100608-000006-45
JP-DM/DM7M-SF12	100608-000309-45
JP-DM/DM10M-SF12	100608-000452-45

\*The above specification is subject to change without prior notice.